

## CF2SCSI™ /SCSIFlash™ PERTEC ½" Tape Drive Emulator to CF

up to **256GB (MLC)**  
**64G (SLC)**

### DESCRIPTION

The CF2SCSI-PERTEC Bridge allows Compact Flash Cards of up to 16GBytes to be attached to the PERTEC Interface on Mini and Mainframe computers.

#### CF card is seen as a PERTEC 1/2" Tape Drive to the host

Compact Flash card, which will be seen as a PERTEC 1/2" Tape Drive on the Host's SCSI bus.

**FLASH2GUI** - Optional ethernet support for centralised backup & restore capability available removing the need to rotate media. Primary data storage is always written to the CF card. No software change to the host required.

More details on FLASH2GUI backup & restore software click [here](#)

### FEATURES

- Small format PCB converts Compact Flash Media to appear as a PERTEC ½" Tape Drive on a Host's SCSI bus
- 3.5" form factor PCB which will replace any 3.5" or 5 ¼" PERTEC ½" Tape Drive
- Will fit in a 3.5" disk slot using the same mountings
- SCSI Host will typically see the device as a PERTEC ½" Tape Drive of any emulation
- Board is low power, using 5V only
- Optional add-on display and pushbutton user interface
- Microcode is field upgradable via integral USB port
- Optional integration support available if required

Solid State Disks Ltd manufacture, design & support sales of the SCSIFlash™ drive through our head office in Reading, United Kingdom.

The SCSIFlash™ is a recognised Trademark of Solid State Disks Ltd.

**Solid State Disks Ltd**

Solid State Disks Ltd  
The Granary  
Hose Hill  
Sulhamstead  
Berks  
RG7 4BB  
United Kingdom  
Tel: +44 (0) 118 9323 499  
Fax: +44 (0) 118 9323 510  
Email: [sales@solidstatedisks.co.uk](mailto:sales@solidstatedisks.co.uk)  
web: [www.solidstatedisks.co.uk](http://www.solidstatedisks.co.uk)

### SPECIFICATIONS



#### Form Factor:

3.5" form factor – 3.75"x5.5"

#### Compact Flash:

Standard 3M header for Type 1 & 2 cards, Push button Ejector to remove CF.

#### CF Capacities Supported:

up to 256GB (MLC) for removable drive and non mission critical applications and up to 64GB (SLC) for fixed disk heavy read/write mission critical applications.

#### Power:

5 Volts only @ 0.8 Watt (Typical) + CF requirement

#### Power connector:

Standard Disk drive type SCSI-1 and 2 Compatible. 50 pin DIL 0.1" Connector

#### SCSI transfer rate:

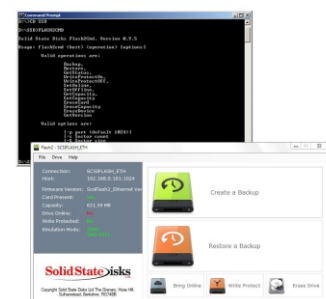
10Mbytes/second

#### LCD Display:

Optional - 2X16 backlit display with push button (mounted externally) for SCSI set-up , real time activity display and real-time diagnostics. Programmable to Emulate any other PERTEC ½" Tape drive Emulator

#### Example fixed disk emulations:

TBA



FLASH2GUI backup & restore software